

Children and Young People's Overview and Scrutiny Committee

1 July 2016



Quarter Four 2015/16 Performance Management Report

Report of Corporate Management Team Lorraine O'Donnell, Assistant Chief Executive Councillor Simon Henig, Leader

Purpose of the Report

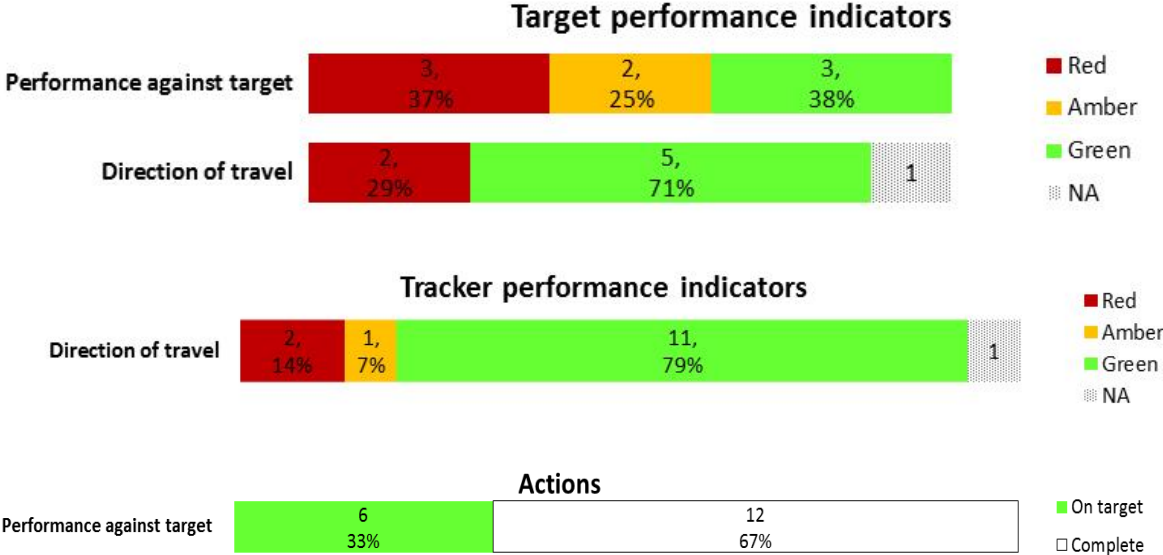
1. To present progress against the council's corporate basket of performance indicators (PIs), Council Plan and service plan actions and report other performance issues for the Altogether Better for Children and Young People theme for the 2015/16 financial year.

Background

2. The council has delivered £153.2 million of financial savings since the beginning of austerity and these savings are forecast to exceed £258 million by 2019/20. Despite this, demand for some of our key services has increased over the year such as looked after children cases, freedom of information requests received and processing of benefit change of circumstances. However, it is encouraging to note that there have been some reductions in demand placed on some of our services. The number of incidents of fly-tipping being reported has continued to reduce although more incidents were reported at quarter four. Fewer new benefit claims required processing and face-to-face customer contacts and telephone calls received are reducing as people are contacting us in other ways such as email and through the web. Other reductions have been observed with fewer people rehoused and overall planning applications have reduced.
3. Against this backdrop of reducing resources and changing demand it is critical that the council continues to actively manage performance and ensure that the impact on the public of the difficult decisions we have had to make is minimised.
4. The report sets out an overview of performance and progress for the Altogether Better for Children and Young People theme. Key performance indicator progress is reported against two indicator types which comprise of:
 - a. Key target indicators – targets are set for indicators where improvements can be measured regularly and where improvement can be actively influenced by the council and its partners (see Appendix 3, table 1); and
 - b. Key tracker indicators – performance will be tracked but no targets are set for indicators which are long-term and/or which the council and its partners only partially influence (see Appendix 3, table 2).

5. The corporate performance indicator guide provides full details of indicator definitions and data sources for the 2015/16 corporate indicator set. This is available to view either internally from the intranet (at Councillors Useful links) or can be requested from the Corporate Planning and Performance Team at performance@durham.gov.uk.
6. For next year's reports work has been carried out by officers and members on developing the proposed indicator set and targets (see Appendix 5) to ensure that our performance management efforts continue to stay focused on the right areas.
7. Members have recently raised specific issues of traffic lighting of performance indicators. We have therefore amended our traffic lighting system and introduced a 2% tolerance on direction of travel similar to that applied to variance from target. Detail of the change is outlined in Appendix 2.

Altogether Better for Children and Young People: Overview



Council Performance

8. Key achievements this quarter include:

- a. Provisional data for 2015/16 show that 1,266 of 5,994 children in need referrals occurred within 12 months of the previous referral, which equals 21.1% (Appendix 4, chart 2). Performance is slightly worse than the target of 21% but is a reduction from 2014/15 (22.6%). Performance remains better than the published 2014/15 figures for all comparator groups.
- b. Provisional data for 2015/16 indicate that there were 161 first time entrants (FTEs) to the youth justice system (372 per 100,000 population). This is well within the target of 280 FTEs (648 per 100,000) and is a reduction from 192 FTEs (438 per 100,000) during the same period last year. The rate of FTEs is lower than in all three benchmarking groups.
- c. Tracker indicators show:
 - i. At 31 March 2016 there were 352 children subject to a child protection plan, which equates to a rate of 35.1 per 10,000 under 18 population. This is a reduction from 37.6 at the same point last year. The rate is better than the March 2015 England (42.9) and North East (59.5) averages.
 - ii. Both under 18 and under 16 conceptions have decreased. Under 18 conceptions have reduced by 17% from 293 in 2013 to 243 in 2014. This equates to a rate of 28.5 per 1,000 population, which is better than the North East average (30.2) but higher than the national rate (22.8). Under 16 conceptions have reduced by 29% from 65 in 2013 to 46 in 2014. This equates to a rate of 5.8 per 1,000 population, which is better than the North East average (6.5) but higher than the national rate (4.4).
 - iii. Data for November 2015 to January 2016 (national measuring period) indicate that 5.9% of 16 to 18 year olds were not in education,

employment or training (NEET), which relates to approximately 976 young people. This is an improvement when compared to 2014/15 (6.7%). This is in line with the North East (5.7%) and statistical neighbours (5.2%) but worse than nationally (4.2%).

- d. Additional service level child safeguarding measures on timeliness of assessments and reviews are provided this quarter and will be included in the corporate indicator set from the next reporting period. Latest provisional data for 2015/16 show positive performance in assessment and review timeliness as follows:
- i. First contact enquiries processed within 24 hours have increased from 75.3% in 2014/15 to 81.6% in 2015/16. All referrals to first contact are triaged with safeguarding referrals prioritised and processed within 24 hours. The majority of enquiries out of timescale are non-statutory referrals.
 - ii. Single assessments completed within 45 working days have also increased from 80.6% in 2014/15 to 84.2% in 2015/16. Performance is better than the latest national benchmarking (81.5%). Cases that are out of timescale are reviewed by managers.
 - iii. 93.9% of children subject to a child protection plan had all of their reviews completed within required timescales. Performance is a slight decrease when compared to last year (94.5%) but in line with latest national benchmarking (94%). All reviews have now taken place.
 - iv. The percentage of children looked after for 20 working days of more, who had their reviews completed within timescales is 94.1%. Performance is better than latest national benchmarking (90.5%). Managers continue to work closely to ensure all reviews are considered individually and do not go out of timescale wherever possible.
- e. Progress has been made with a number of Council Plan actions as follows:
- i. The review of the school nursing service for 5 to 19 year olds and implementation of an improved service has been completed. Harrogate and District NHS Foundation Trust commenced as the new 0 to 19 year olds service provider in County Durham from 1 April 2016, with a new service specification and all risks mitigated. This included a review of the 5 to 19 year olds school nursing service.
 - ii. To support the implementation of the Unintentional Injuries Strategy, injury profiles have been collated and shared (including accident and emergency attendances), with relevant partners to help plan and evaluate injury prevention programmes. A report on unintentional injuries, including benchmarking was considered by the Children and Families Partnership Board in April 2016 where it was agreed that the Unintentional Injuries Strategy required a refresh in light of new datasets being published.
 - iii. The Participation Plan Believe, Achieve and Succeed: Increasing the Participation of Young People in Learning has been updated to

increase the participation of young people in learning and reduce the number of young people NEET or not known.

9. The key performance improvement issues for this theme are:

- a. The recent Ofsted inspection report outlines many positive findings but the overall inspection judgement is 'requires improvement' and we accept there are some areas where further improvement is needed. Areas for improvement include case file recording, social work assessment and analysis and care planning. Inspectors found drift and delay in some children's cases. Performance information was found to be extensive and had resulted in some improved outcomes however some issues concerning the quality of social work practice and recording remain. Social workers were carrying too many cases in some teams as a result of recent staff shortages and some children and families were experiencing too many changes of social worker. Based on the feedback during the inspection a great deal of work is already underway to bring these areas up to a consistently 'good' standard.
- b. Data for October to December 2015 show that 18% of mothers (248 of 1,381) were smoking at the time of delivery. Performance is achieving the annual target (18.2%) and is an improvement on the same period in 2014 (18.3%). In County Durham, the rate was 14% in North Durham Clinical Commissioning Group (CCG) and 21.2% in Durham Dales, Easington and Sedgefield CCG. Whilst the rate is improving, it remains worse than the England average of 10.6% and the North East CCG average of 16.7%.

The number of pregnant women setting a quit date with the Stop Smoking Service has continued to rise since the implementation in 2013 of the babyClear pathway, the North East's regional approach to reducing maternal smoking rates. Between April and December 2015, this rose to 63% (114 of 181 women setting a quit date) compared to 55% (76 of 138) in the same period in 2014 and 46% in England.

Solutions4Health were commissioned as County Durham's new Stop Smoking Service from 1 April 2016. They will continue to work closely with maternity services ensuring the babyClear pathway continues and midwives refer pregnant smokers to the new service and aim to continue to decrease smoking at the time of delivery in County Durham.

c. Tracker indicators show:

- i. At 31 March 2016, there were 678 looked after children (LAC) in County Durham, which equates to a rate of 67.6 per 10,000 population. This is an increase from 62 (610 LAC) at the same point last year (Appendix 4, Chart 1). Latest benchmarking data, as at 31 March 2015, shows that Durham's LAC rate is lower than the North East average (82) and statistical neighbours (83.1) but higher than the national average of 60. The increase reflects a national trend. The population of children in care in England is at a 30-year high; a total of 69,540 children were in care at the end of March 2015. According to official statistics published by the Department for Education (DfE), the number of looked-after children is "*now higher than at any point since 1985*" (DfE, Children looked after in England (including adoption and care

leavers) year ending 31 March 2015). The number of LAC continues to be monitored closely. Over 70% of LAC in County Durham have a plan of permanence and the LAC Reduction Strategy continues to be implemented.

- ii. Data for October to December 2015 show that 396 of 1,388 mothers were breastfeeding at six to eight weeks from birth. This equates to 28.5% which is a slight increase from 27.7% between October and December 2014 and is in line with the rate of 28.4% (April to June 2015) for the Durham, Darlington and Tees area team. It is however significantly worse than the England rate for April to June 2015 (45.2%).
- iii. Latest data show 186 of the 402 young people in the July 2013 to June 2014 cohort (cohort of young offenders who offended between July 2013 and June 2014) re-offended within 12 months of inclusion in the cohort, which equals 46.3%. The re-offending rate has increased when compared to the previous year (40.9%) and is higher than that in all comparator groups. As highlighted previously, there has been a significant reduction in the number of young people included in the Durham cohort. In 2005 there were 1,735 young people in the offending cohort compared to 402 in the current cohort. County Durham Youth Offending Service (CDYOS) are now dealing with young offenders who have more complex circumstances and entrenched behaviours.

10. There are no Council Plan actions which have not achieved target in this theme.

11. There are no key risks which require any mitigating action in delivering the objectives of this theme.

Recommendation and Reasons

12. That the Children and Young People's Overview and Scrutiny Committee receive the report and consider any performance issues arising there from.

Contact: Jenny Haworth, Head of Planning and Performance
Tel: 03000 268071 **E-Mail:** jenny.haworth@durham.gov.uk

Appendix 1: Implications

Appendix 2: Key to symbols used in the report

Appendix 3: Summary of key performance indicators

Appendix 4: Volume measures

Appendix 5: Corporate indicator set and 3 year targets

Appendix 1: Implications

Finance - Latest performance information is being used to inform corporate, service and financial planning.

Staffing - Performance against a number of relevant corporate health Performance Indicators (PIs) has been included to monitor staffing issues.

Risk - Reporting of significant risks and their interaction with performance is integrated into the quarterly monitoring report.

Equality and Diversity / Public Sector Equality Duty - Corporate health PIs are monitored as part of the performance monitoring process.

Accommodation - Not applicable

Crime and Disorder - A number of PIs and key actions relating to crime and disorder are continually monitored in partnership with Durham Constabulary.

Human Rights - Not applicable

Consultation - Not applicable

Procurement - Not applicable

Disability Issues - Employees with a disability are monitored as part of the performance monitoring process.

Legal Implications - Not applicable

Appendix 2: Key to symbols used within the report

Our traffic lighting system has been amended this quarter, introducing a 2% tolerance to variance from previous performance and comparator groups, similar to that applied to variance from target. Detail of the change is outlined in the table below:

Performance Indicators:

Previous traffic light system		Current (amended) traffic light system			
<i>Variation from previous performance and comparator benchmarking groups</i>		<i>Variation from previous performance and comparator benchmarking groups</i>		<i>Variation from target</i>	
Better than comparable period / comparator group	Green	Same or better than comparable period / comparator group	Green	Meeting/Exceeding target	Green
Same as comparable period / comparator group	Amber	Worse than comparable period / comparator group (within 2% tolerance)	Amber	Worse than target (within 2% tolerance)	Amber
Worse than comparable period / comparator group	Red	Worse than comparable period / comparator group (greater than 2%)	Red	Worse than target (outside of 2% tolerance)	Red

Where the traffic light system appears in this report, they have been applied to the most recently available information.

Nearest Neighbour Benchmarking:

The nearest neighbour model was developed by the Chartered Institute of Public Finance and Accountancy (CIPFA), one of the professional accountancy bodies in the UK. CIPFA has produced a list of 15 local authorities which Durham is statistically close to when you look at a number of characteristics. The 15 authorities that are in the nearest statistical neighbours group for Durham using the CIPFA model are: Barnsley, Wakefield, Doncaster, Rotherham, Wigan, Kirklees, St Helens, Calderdale, Dudley, Northumberland, Tameside, Sheffield, Gateshead, Stockton-on-Tees and Stoke-on-Trent.

We also use other neighbour groups to compare our performance. More detail of these can be requested from the Corporate Planning and Performance Team at performance@durham.gov.uk.

Actions:

WHITE	Complete (action achieved by deadline/achieved ahead of deadline)
GREEN	Action on track to be achieved by the deadline
RED	Action not achieved by the deadline/unlikely to be achieved by the deadline

Appendix 3: Summary of Key Performance Indicators

Table 1: Key Target Indicators

Ref	PI ref	Description	Latest data	Period covered	Period target	Current performance to target	Data 12 months earlier	Performance compared to 12 months earlier	National figure	*North East figure **Nearest statistical neighbour figure	Period covered
Altogether Better for Children and Young People											
15	CASCYP 15	Percentage of children in the early years foundation stage achieving a good level of development	63.6	2014/15 ac yr	60.0	GREEN	56.7	GREEN	66.0	63*	2014/15 ac yr
16	CASCYP4	Percentage of pupils achieving five or more A*-C grades at GCSE or equivalent including English and maths	55.1	2014/15 ac yr	58.8	RED	57.6	NA [2]	57.1	55.4*	2014/15 ac yr England (state funded schools)
17	CASCYP7	Achievement gap (percentage points) between Durham pupils eligible/not eligible for pupil premium funding achieving five A*-C GCSE's including English and maths at key stage 4	29.9	2014/15 ac yr	28.0	RED	29.2	RED	28.0		2014/15 ac yr (state funded schools)
18	CASCYP6	Achievement gap (percentage points) between Durham pupils eligible/not eligible for pupil premium funding achieving level 4 in reading, writing and maths at key stage 2	17.0	2014/15 ac yr	13.0	RED	15.9	RED	15.0	15*	2014/15 ac yr

Ref	PI ref	Description	Latest data	Period covered	Period target	Current performance to target	Data 12 months earlier	Performance compared to 12 months earlier	National figure	*North East figure **Nearest statistical neighbour figure	Period covered
19	CASCYP5	Percentage of pupils on level 3 programmes in community secondary schools achieving two A levels at grade A*-E or equivalent	98.8	2014/15 ac yr (state funded schools)	98.9	AMBER	98.7	GREEN	98.3	98.8*	2014/15 ac yr (state funded schools)
									GREEN	GREEN	
20	CASAS5	First time entrants to the youth justice system aged 10 to 17 (per 100,000 population of 10 to 17 year olds) (Also in Altogether Safer)	372	2015/16 (provisional)	648	GREEN	438	GREEN	376	404**	Oct 2014 - Sep 2015
									GREEN	GREEN	
21	CASCYP9	Percentage of children in need referrals occurring within 12 months of previous referral [3]	21.1	2015/16 (provisional)	21.0	AMBER	22.6	GREEN	24	22.3*	2014/15
									GREEN	GREEN	
22	CASCYP8	Percentage of mothers smoking at time of delivery (Also in Altogether Healthier)	18.0	Oct - Dec 2015	18.2	GREEN	18.3	GREEN	10.6	16.7*	Oct - Dec 2015
									RED	RED	

[2] Due to changes to the definition data are not comparable/available

[3] Data 12 months earlier amended (final published data)

Table 2: Key Tracker Indicators

Ref	PI ref	Description	Latest data	Period covered	Previous period data	Performance compared to previous period	Data 12 months earlier	Performance compared to 12 months earlier	National figure	*North East figure **Nearest statistical neighbour figure	Period covered
Altogether Better for Children and Young People											
121	CASCYP 16	Percentage of 16 to 18 year olds who are not in education, employment or training (NEET) (Also in Altogether Wealthier)	5.9	Nov 2015 - Jan 2016	6.0	GREEN	6.7	GREEN	4.2	5.7*	Nov 2015 - Jan 2016
122	ACE016	Percentage of children in poverty (quarterly proxy measure) (Also in Altogether Better Council)	22.3	As at Aug 2015	22.5	GREEN	23.0	GREEN	16.1	22.9*	As at Aug 2015
123	ACE017	Percentage of children in poverty (national annual measure) (Also in Altogether Better Council)	22.5	2013	22.6	GREEN	22.6	GREEN	18.6	23.3*	2013
124	CASCYP 18	Percentage of children aged 4 to 5 years classified as overweight or obese (Also in Altogether Healthier)	23.0	2014/15 ac yr	23.8	GREEN	23.8	GREEN	21.9	23.7*	2014/15 ac yr
125	CASCYP 19	Percentage of children aged 10 to 11 years classified as overweight or obese (Also in Altogether Healthier)	36.6	2014/15 ac yr	36.1	AMBER	36.1	AMBER	33.2	35.9*	2014/15 ac yr
126	CASCYP 29	Proven re-offending by young people (who offend) in a 12 month period (%) (Also in Altogether Safer)	46.3	Jul 2013 - Jun 2014	44.7	RED	40.9	RED	37.8	42.3*	Jul 2013 - Jun 2014

Ref	PI ref	Description	Latest data	Period covered	Previous period data	Performance compared to previous period	Data 12 months earlier	Performance compared to 12 months earlier	National figure	*North East figure **Nearest statistical neighbour figure	Period covered
									RED	RED	
127	CASCYP 20	Under 18 conception rate per 1,000 girls aged 15 to 17	28.5	2014	30.5	GREEN	33.8	GREEN	22.8	30.2*	2014
									RED	GREEN	
128	CASCYP 21	Under 16 conception rate per 1,000 girls aged 13 to 15	5.8	2014	7.9	GREEN	7.9	GREEN	4.4	6.5*	2014
									RED	GREEN	
129	CASCYP 23	Emotional and behavioural health of children looked after continuously for 12 months or more (scored between 0 to 40)	14.9	2015/16 (provisional)	15.1	GREEN	15.1	GREEN	13.9	13.9*	2013/14
									RED	RED	
130	CASCYP 30	Percentage of Child and Adolescent Mental Health Services (CAMHS) patients who have attended a first appointment within nine weeks of their external referral date	77.3	2015/16	82.8	RED	73.5	GREEN			
131	CASCYP 26	Young people aged 10 to 24 years admitted to hospital as a result of self-harm (rate per 100,000 population aged 10 to 24 years)	489.4	2011/12 - 2013/14	504.8	GREEN	504.8	GREEN	367.3	532.2*	England - 2011/12 - 2013/14 NE - 2010/11 - 2012/13
									RED	GREEN	
132	CASCYP 28	Rate of children with a child protection plan per 10,000 population	35.1	As at Mar 2016 (provisional)	34.7	AMBER	37.6	GREEN	42.9	59.5*	As at Mar 2015
									GREEN	GREEN	

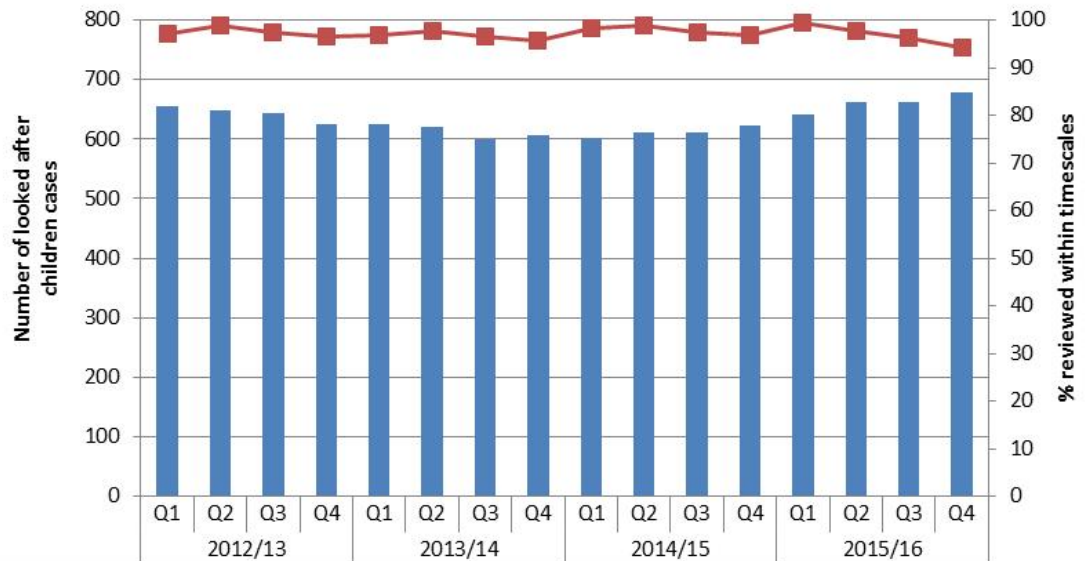
Ref	PI ref	Description	Latest data	Period covered	Previous period data	Performance compared to previous period	Data 12 months earlier	Performance compared to 12 months earlier	National figure	*North East figure **Nearest statistical neighbour figure	Period covered
133	CASCYP 14	Number of successful interventions (families turned around) via the Stronger Families Programme (Also in Altogether Safer)	129	Sep 2014 - Dec 2015	23	Not comparable [13]	NA	NA			
134	CASCYP 24	Rate of looked after children per 10,000 population aged under 18 [3]	67.6	As at Mar 2016	65.9	RED	62.0	RED	60.0	82*	As at Mar 2015
135	CASCYP 25	Prevalence of breastfeeding at 6 to 8 weeks from birth (Also in Altogether Healthier)	28.5	Oct - Dec 2015	29.6	RED	27.7	GREEN	45.2	28.4*	Apr - Jun 2015 (NE - Durham, Darlington and Tees area team)

[3] Data 12 months earlier amended (final published data)/refreshed

[13] Amended to track the number for 2015/16 and will be reported as a % target PI again 2016/17

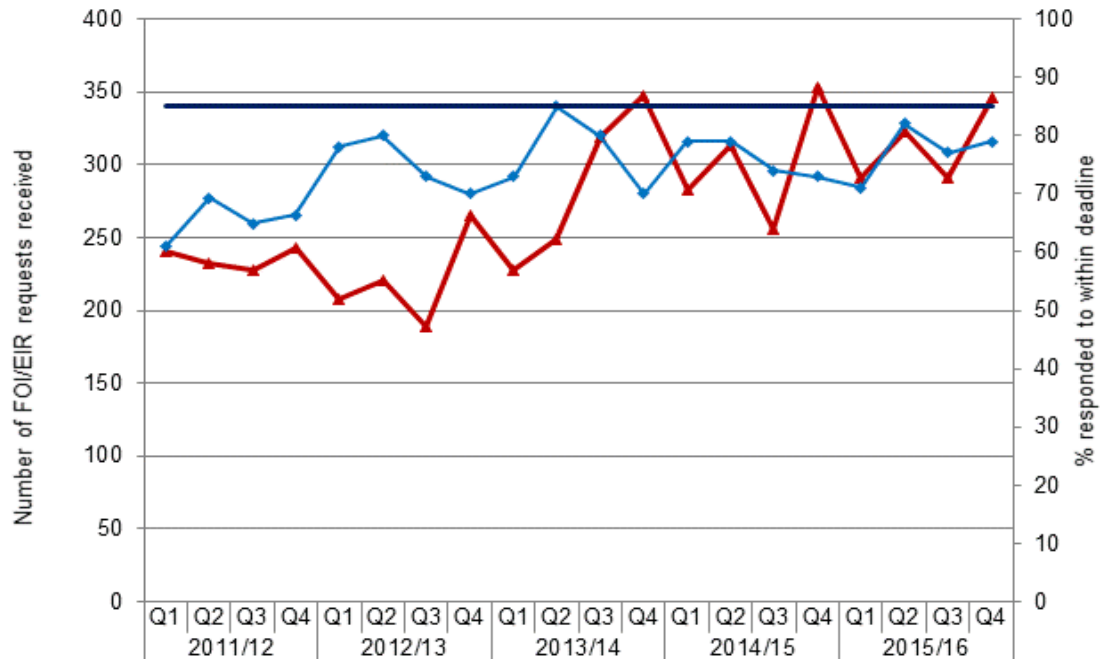
Appendix 4: Volume Measures

Chart 1 - Number of looked after children cases



	Q1	Q2	Q3	Q4	Q1	Q2	Q3	Q4	Q1	Q2	Q3	Q4	Q1	Q2	Q3	Q4
Number of looked after children cases	654	648	643	626	624	620	599	607	603	611	611	622	641	661	661	678
% reviewed within timescales	97.0	98.7	97.5	96.5	96.9	97.8	96.6	95.7	98.3	98.8	97.5	96.7	99.4	97.8	96.3	94.1

Chart 2 - Children in need referrals within 12 months of previous referral



	Q1	Q2	Q3	Q4	Q1	Q2	Q3	Q4	Q1	Q2	Q3	Q4	Q1	Q2	Q3	Q4
Number of FOI/EIR requests received	240	232	227	243	208	221	189	265	227	249	319	347	283	313	256	353
FOI/EIR requests responded to within statutory deadlines (%)	61	69	65	66	78	80	73	70	73	85	80	70	79	79	74	73
Target (%)	85	85	85	85	85	85	85	85	85	85	85	85	85	85	85	85

Appendix 5: Proposed 2016/17 Corporate Indicator set and 3 year targets

Indicator Type	PI ref	PI Description	Service	Frequency	Performance		2015/16 Target	Proposed targets			National Comparison
					2014/15	2015/16 Q3		2016/17	2017/18	2018/19	
Altogether Better for Children and Young People											
Target	CAS CYP15	Percentage of children in the early years foundation stage achieving a good level of development	CAS	Annual (Q2 provisional Q3 validated)	56.7 (2013/14 ac yr)	63.6 (2014/15 ac yr)	60 (2014/15 ac yr)	64	Not set	Not set	66 (2014/15 ac yr)
Tracker	NEW	Attainment 8 and Progress 8 TBC	CAS	Annual	NA	NA					
Tracker	NEW	Primary School Scaled Scores TBC	CAS	Annual	NA	NA					
Target	CAS CYP5	Percentage of pupils on level 3 programmes in community secondary schools achieving 2 A levels at grade A*-E or equivalent	CAS	Annual (Q2 provisional Q3 validated)	98.7 (2013/14 ac yr)	98.8 (2014/15 ac yr)	98.9 (2014/15 ac yr)	98.9	99	99	98.3 (2014/15 ac yr)
Tracker	CAS CYP16	Percentage of 16 to 18 year olds who are not in education, employment or training (NEET) (Also in Altogether Wealthier)	CAS	National measure (Nov-Jan average) reported Q4. Quarterly averages reported Q1 to Q3.	6.7	6					4.2 (Nov 15 – Jan 16)
Tracker	NEW	The achievement gap at Key Stage 4 between children who are eligible for pupil premium and those children who are not	CAS	Annual	New definition for 2016/17	New definition for 2016/17					New definition for 2016/17

Indicator Type	PI ref	PI Description	Service	Frequency	Performance		2015/16 Target	Proposed targets			National Comparison
					2014/15	2015/16 Q3		2016/17	2017/18	2018/19	
		eligible									
Tracker	NEW	The achievement gap at Key Stage 2 between children who are eligible for pupil premium and those children who are not eligible	CAS	Annual	New definition for 2016/17	New definition for 2016/17					New definition for 2016/17
Tracker	ACE016	Percentage of children in poverty (quarterly proxy measure) (Also in Altogether Better Council)	ACE	Quarterly	22.7	22.5 (Q1)					16.1 (as at Aug 2015)
Tracker	ACE017	Percentage of children in poverty (national annual measure) (Also in Altogether Better Council)	ACE	Annual Q2	22.6 (2012)	22.5 (2013)					18.6 (2013)
Tracker	CAS CYP18	Percentage of children aged 4 to 5 classified as overweight or obese (Also in Altogether Healthier)	CAS	Annual Q3	23.8 (2013/14 ac yr)	23 (2014/15 ac yr)					21.9 (2014/15 ac yr)
Tracker	CAS CYP19	Percentage of children aged 10 to 11 classified as overweight or obese (Also in Altogether Healthier)	CAS	Annual Q3	36.1 (2013/14 ac yr)	36.6 (2014/15 ac yr)					33.2 (2014/15 ac yr)
Tracker	CAS CYP29	Proven re-offending by young people (who offend) in a 12 month period (Also in Altogether Safer)	CAS	Quarterly	38.7 (2012)	44.4 (2013)					37.9 (2013/14)

Indicator Type	PI ref	PI Description	Service	Frequency	Performance		2015/16 Target	Proposed targets			National Comparison
					2014/15	2015/16 Q3		2016/17	2017/18	2018/19	
Tracker	CAS CYP20	Under 18 conception rate per 1,000 girls aged 15 to 17	CAS	Annual Q4	33.8 (2013)	30.5 (Q3 2014)					22.8 (2014)
Tracker	CAS CYP21	Under 16 conception rate per 1,000 girls aged 13 to 15	CAS	Annual Q4	8.9 (2012)	7.9 (2013)					4.8 (2013)
Target	CAS AS5	First time entrants to the Youth Justice System aged 10 to 17 (per 100,000 population of 10 to 17 year olds) (Also in Altogether Safer)	CAS	Quarterly	438	245	648 (280 FTEs)	578 (250 FTEs)	578 (250 FTEs)	Not yet set	376 (Oct 2014 – Sep 2015)
Tracker	CAS CYP23	Emotional and behavioural health of children looked after continuously for 12 months or more (scored between 0-40)	CAS	Annual Q4	15.5 (2013/14)	15.1 (2014/15)					13.9 (2013/14)
Tracker	CAS CYP30	Percentage of Community and Adolescent Mental Health Services (CAMHS) patients who have attended a first appointment within 9 weeks of their external referral date	CAS	Quarterly	New indicator	82.8					
Tracker	CAS CYP26	Young people aged 10 to 24 years admitted to hospital as a result of self-harm (rate per 100,000 population aged 10-24 years) (Also in Altogether	CAS	Annual Q4	504.8 (2010/1 1-2012/13)	489.4 (2011/12 - 2013/14)					367.3 (2011/12 – 2013/14)

Indicator Type	PI ref	PI Description	Service	Frequency	Performance		2015/16 Target	Proposed targets			National Comparison
					2014/15	2015/16 Q3		2016/17	2017/18	2018/19	
		Healthier)									
Target	CAS CYP9	Percentage of children in need referrals occurring within 12 months of previous referral	CAS	Quarterly	22.8	21.2	21	19.5	17.3	15	24 (2014/15)
Tracker	CAS CYP28	Rate of children with a Child Protection Plan per 10,000 population	CAS	Quarterly	37.6	34.7					42.9 (2014/15)
Tracker	CASCYP 12	Percentage of children subject to a child protection plan who had all of their reviews completed within required timescales	CAS	Quarterly	94.5	9.13					94 (2014/15)
Tracker	CYP11	Percentage of children looked after who had all of their reviews completed within required timescale	CAS	Quarterly	96.4	96.3					90.5 (2009/10)
Tracker	NEW	Number of child sexual exploitation referrals	CAS	TBC	New indicator	New indicator					
Target	NEW	Percentage of First Contact enquiries processed within 24 hours	CAS	Quarterly	75.3	81.8		TBC	TBC	TBC	
Target	NEW	Percentage of Single Assessments completed within 45 working days	CAS	Quarterly	80.6	80.5		TBC	TBC	TBC	81.5 (2014/15)

Indicator Type	PI ref	PI Description	Service	Frequency	Performance		2015/16 Target	Proposed targets			National Comparison
					2014/15	2015/16 Q3		2016/17	2017/18	2018/19	
Target	CAS CYP14	Percentage of successful interventions (families 'turned around') via the Stronger Families Programme (Also in Altogether Safer)	CAS	Quarterly	New programme	PI is number this year to get baseline	12** **Stage 2 of the Programme	TBC	TBC	TBC	
Tracker	CAS CYP24	Rate of Looked After Children per 10,000 population	CAS	Quarterly	61.8	65.9					60 (2014/15)
Target	CAS CYP8	Percentage of mothers smoking at time of delivery (Also in Altogether Healthier)	CAS	Reported as discrete quarters through the year then annually at year end	19	18.1 (Q2)	18.2	17.2	Not yet set	Not yet set	10.6 (Oct – Dec 2015)